

A Modern View
On A Timeless Lifestyle

KALAE
1000 ALA MOANA





Kalae.
Endless Views of an
Iconic Shoreline.

Between the vivid green of the Ko'olau mountains and the luminescent blues of the Pacific, Kalae embraces O'ahu's expansive southern shore and majestic Diamond Head, setting the stage for a dramatic interpretation of contemporary island living.





INSPIRATION

Modern. Timeless. Immersive.

Kalae is a place for the passionate and curious. Its distinct design and ideal location create spectacular moments within the property and throughout the neighborhood.

The collective experience – the views, the Mālie Courtyards, the distinctive residences – define the Kalae lifestyle.

A Bold Vision Requires Incomparable Design.

The celebrated design team behind Kalae found endless inspiration in Hawai'i's rich architectural heritage and abundant natural beauty.



INTERIORS

Nicole Hollis

“Kalae is a graceful expression of contrasts; formal and elegant, yet relaxed and restrained. Thoughtful details are incorporated throughout – from the Lobby’s intricately patterned stone flooring to the Courtyards’ handcrafted tiles and shutters – these diverse materials are combined to strike the perfect harmony of global and Hawaiian influences to create residences unlike any other.”



ARCHITECTURE

Ben Wrigley

“Seamlessly integrating the indoors with the outdoors, a series of courtyards, decorative geometric motifs and screens, and framed vistas characterize the amenity experience at Kalae. The grandeur of these formal arrangements and architectural gestures are juxtaposed with more casual and intimate Hawaiian living spaces.”



LANDSCAPE

Don Vita

“More a series of outdoor rooms set within a tropical oasis, each Mālie Courtyard has a distinct character imparted by fragrant flowers, signature plantings, shade pavilions, and calming water features. The private pool and amenity level offers a wide variety of outdoor experiences floating above Victoria Ward Park, revealing spectacular views of Diamond Head and sunsets over the Pacific Ocean.”



WARD VILLAGE, SOUTH SHORE HONOLULU

Distinguished by panoramic views of the expansive southern shores and iconic Diamond Head, Kalae offers a contemporary lifestyle in harmony with the surrounding natural world.



A VIBRANT COMMUNITY

Ward Village is a community inspired by the spirit of the islands while embracing the energy of modern Honolulu. An afternoon stroll through its pedestrian-centric shopping districts and abundant green spaces reveals a dynamic neighborhood where quaint boutiques and one-of-a-kind artisanal shops line the same palm-shaded walkways. Enjoy access to restaurants, markets, and local eateries where international tastes are infused with local flavor.



KALAE AND VICTORIA WARD PARK

LIFE IN BALANCE

Merging the world outside and the lifestyle within, the lush green and dappled sunlight of the surrounding park and gardens extend a seamless welcome to Kalae.

LEVEL 1

Welcome Home

KALAE
1000 ALA MOANA

A Timeless Lifestyle

While Kalae is informed by the natural beauty of the island, it is a world unto itself, designed to inspire, engage, and reward its residents. Here, interiors feature soaring windows that fill residences with luminous vistas and an endless expanse of Pacific blue. From its numerous pools, water features, and distinctive suite of captivating courtyards, Kalae is historic, modern, and entirely unique.





LOBBY ENTRANCE



RESIDENTIAL LOBBY



WELCOME TO THE MĀLIE COURTYARDS

The Mālie Courtyards are serene expressions of a timeless way of life. The semi-private indoor-outdoor courtyards with adjacent bungalows feature lush green spaces designed to awaken your senses and foster connection with people and place.



PATH TO MĀLIE COURTYARDS

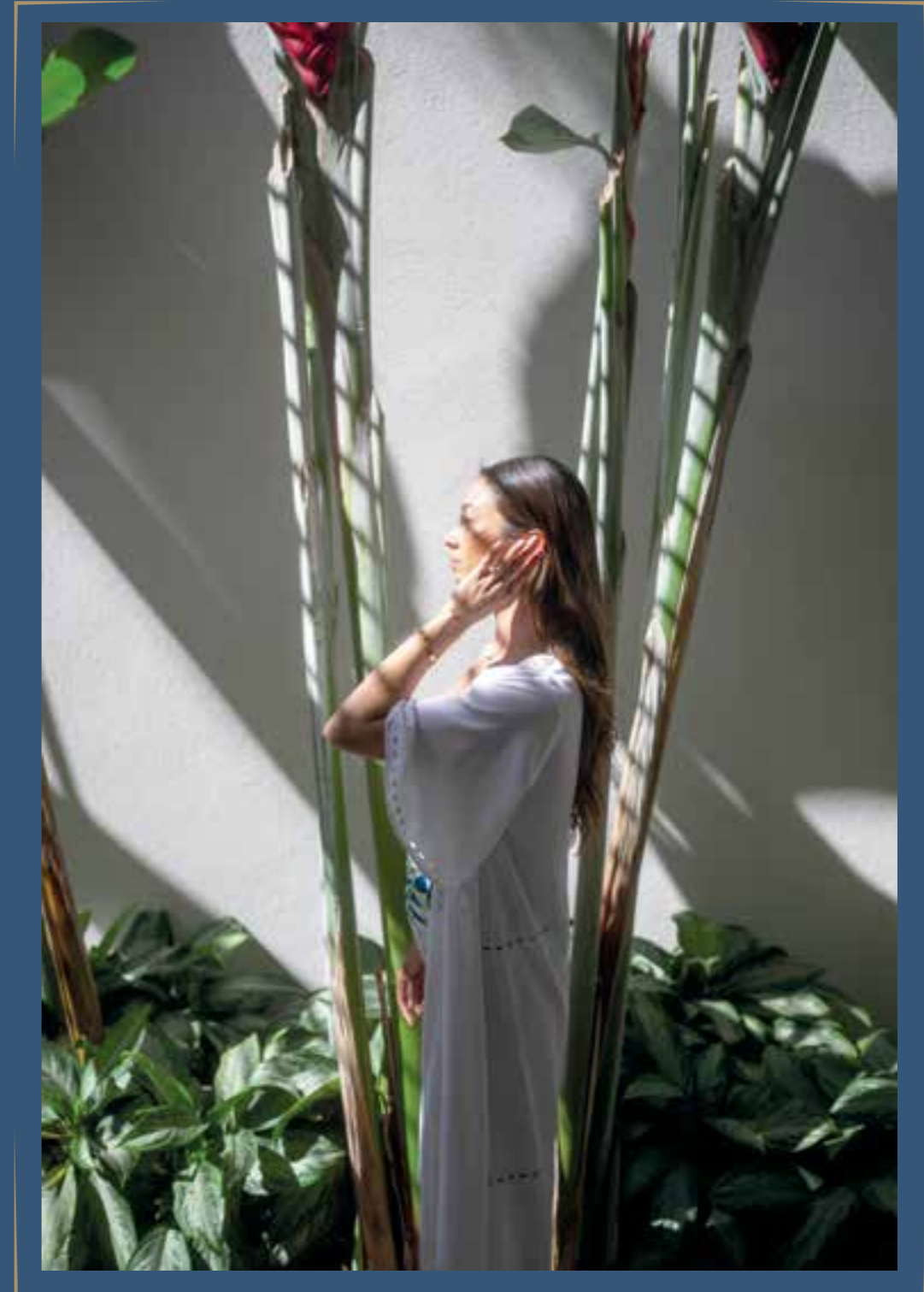


MALIE COURTYARD SUNSET



RELAX AND RECONNECT

The courtyards are destinations in and of themselves, a place for reconnecting with friends, family, and the quiet comforts of nature.







MĀLIE COURTYARD MAKAI POOL

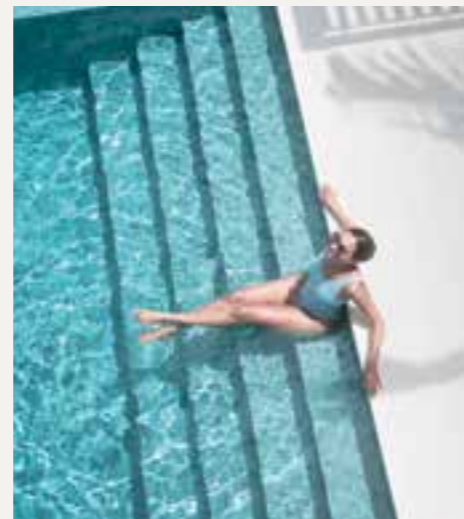
LEVEL 5

A Place for
Rest and Renewal

KALAE
1000 ALA MOANA

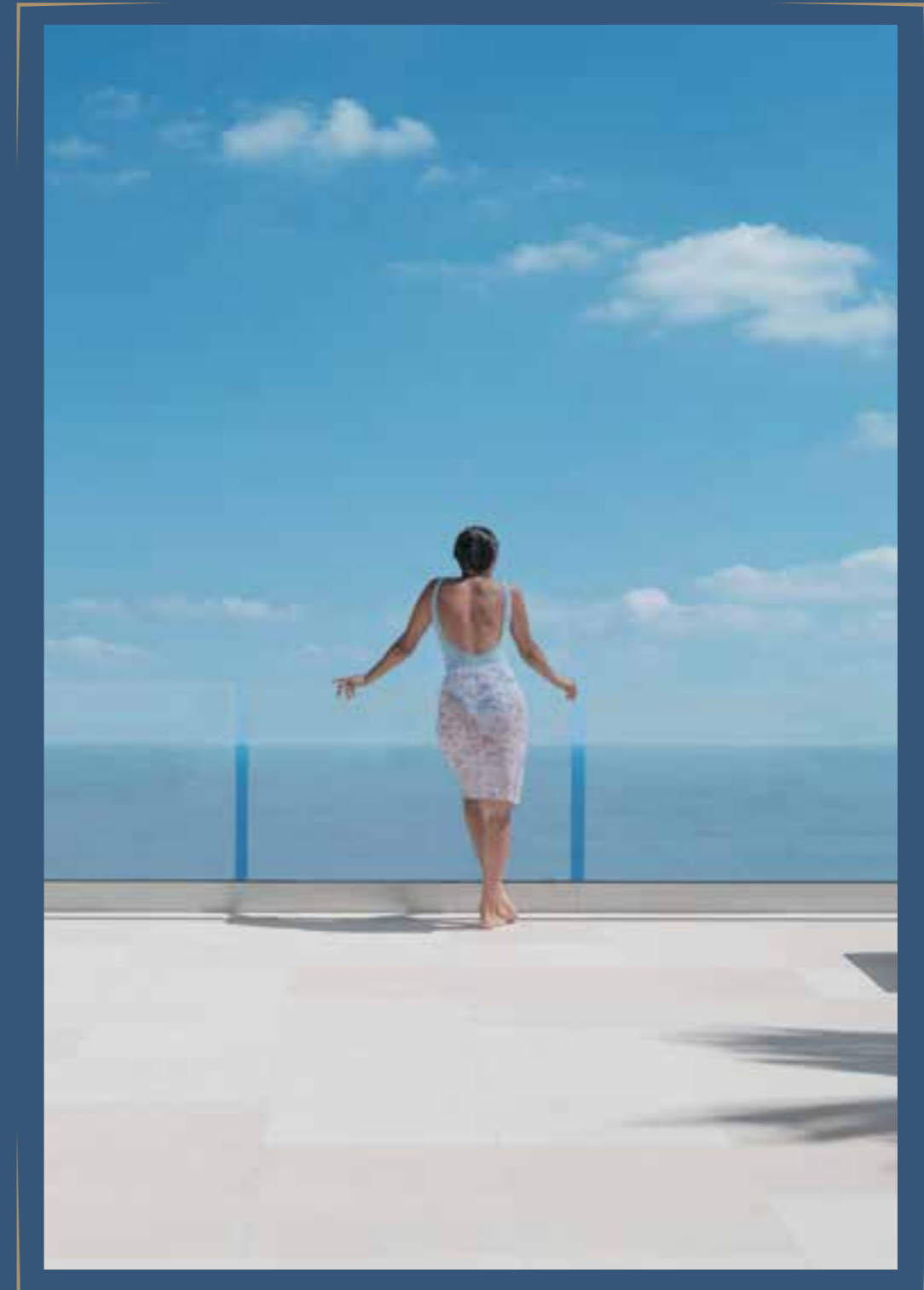


OWNERS LOUNGE



SPARKLING WATERS. STUNNING VIEWS.

Slow down, unwind, and breathe in the trade winds while taking in unparalleled views from Diamond Head to the horizon. Here you'll find abundant health and wellness opportunities, as well as beautifully furnished common areas for quiet moments of reflection and celebrations large and small.





RESORT POOL



FITNESS POOL

HOME

Exceptional Views.
Immersive Experiences.
Timeless Living.

KALAE
1000 ALA MOANA

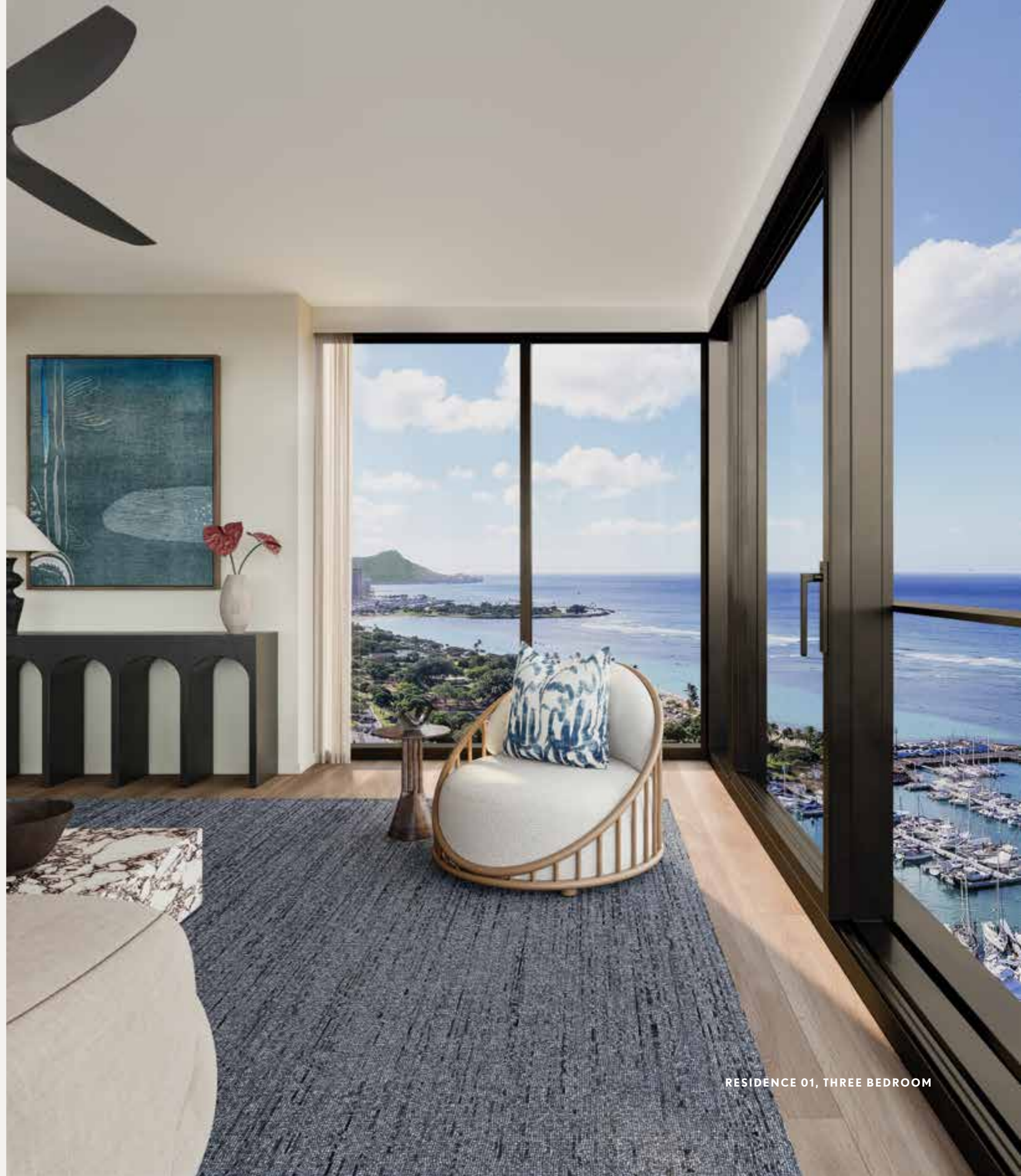




RESIDENCE 00, THREE BEDROOM

A Modern Home with Legacy Views

Shimmering with light reflected from the Pacific, Kalae was positioned to maximize exposure to the mesmerizing landscapes and ocean vistas along O'ahu's southern shore. Residence interiors feature open designs that invite quiet moments and family connection.



RESIDENCE 01, THREE BEDROOM



RESIDENCE 02, TWO BEDROOM



RESIDENCE 03, ONE BEDROOM



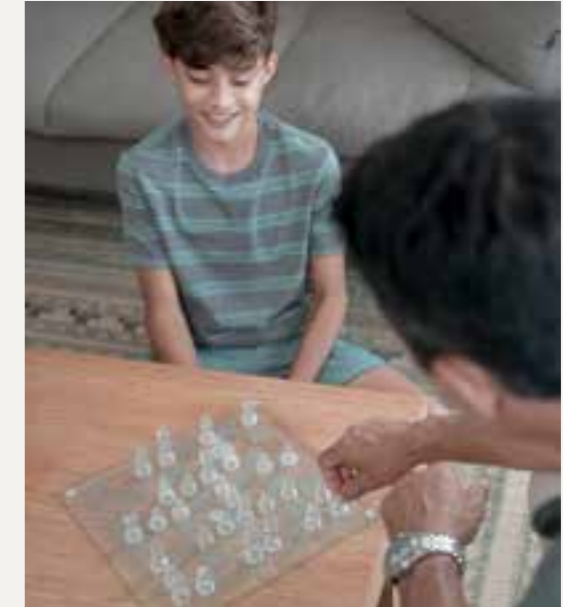
RESIDENCE 08, ONE BEDROOM



RESIDENCE 07, ONE BEDROOM



RESIDENCE 10, TWO BEDROOM



ELEVATED LIVING

Gracious living areas invite relaxed connections and opportunities for quality time with friends and family.





GRACIOUSLY DESIGNED, MINDFULLY APPOINTED

Open kitchens feature generous use of high-quality stone and wood finishing, premium fixtures, and thoughtful amenities such as an appliance garage that allows for seamless storage.



ESCAPE THE EVERYDAY

Featuring artful details and gleaming finishes, the spa-like suite exudes grace and refinement.





EFFORTLESS HOSTING

A celebration of form and function, the entertainment cabinet serves as an extension of the open-plan kitchen.





CUSTOMIZED WORKSPACE

A built-in workspace caters to modern lifestyles, providing a place for focused productivity.

Legendary Views. Iconic Design.

A graceful reinterpretation of heritage architecture
surrounded by spectacular natural beauty,
Kalae invites those in search of a timeless island
lifestyle that will be cherished for generations to come.



CONTACT

WARD VILLAGE
Sales Gallery

1240 Ala Moana Boulevard, Suite 100
Honolulu, Hawai'i 96814
808 369 9600

Japan Gallery

9-5-12-202 Akasaka
Minato-ku
Tokyo, Japan
107-0052
+81 (0) 800 800 5355

kalaewardvillage.com

OFFERED BY WARD VILLAGE PROPERTIES, LLC RB-21701



WARD VILLAGE.

KALAE IS A PROPOSED CONDOMINIUM PROJECT (THE "PROJECT") TO BE LOCATED IN HONOLULU, HAWAII THAT DOES NOT YET EXIST. THE PROJECT IS LOCATED IN WARD VILLAGE, A PROPOSED MASTER PLANNED DEVELOPMENT THAT IS CURRENTLY BEING DEVELOPED. ALL VISUAL DEPICTIONS OF WARD VILLAGE AND THE PROJECT ARE FOR ILLUSTRATIVE PURPOSES ONLY AND MAY NOT REPRESENT ACTUAL AMENITIES OR FACILITIES IN THE PROJECT AND WARD VILLAGE AND SHOULD NOT BE RELIED UPON IN DECIDING TO PURCHASE OR LEASE AN INTEREST IN THE PROJECT. THE DEVELOPER MAKES NO GUARANTEE, REPRESENTATION OR WARRANTY WHATSOEVER THAT THE RENDERINGS, PHOTOS, DRAWINGS OR OTHER REPRESENTATIONS OF THE PROJECT, INCLUDING THE UNITS, AMENITIES AND OTHER ELEMENTS OF THE PROJECT THAT ARE DELIVERED OR SHOWN TO PROSPECTIVE PURCHASERS WILL ULTIMATELY BE CONSTRUCTED AS SHOWN. THE NAMES OF AMENITY AREAS ARE SUBJECT TO CHANGE. SELLER MAY SUBSTITUTE ANY OR ALL THE BRANDS, MODELS, MATERIALS, FINISHES, FLOOR COVERINGS, COLORS, FIXTURES AND OTHER ITEMS IN THE UNIT AND THE PROJECT WITH ITEMS OF SUBSTANTIALLY EQUAL QUALITY AND UTILITY. THIS IS NOT INTENDED TO BE AN OFFERING OR SOLICITATION OF SALE IN ANY JURISDICTION WHERE THE PROJECT IS NOT REGISTERED IN ACCORDANCE WITH APPLICABLE LAW OR WHERE SUCH OFFERING OR SOLICITATION WOULD OTHERWISE BE PROHIBITED BY LAW.


THE CORNER LANDSCAPED AREA, INCLUDING WALKWAYS AND VEHICULAR ACCESS, ON THE CORNER OF AUAHI STREET AND WARD AVENUE IN THE DEPICTIONS ARE ON A SEPARATE LOT ADJACENT TO THE CONDOMINIUM PROJECT LOT ("CORNER LOT"), WHICH IS NOT A PART OF THE CONDOMINIUM PROJECT. THE DEVELOPER IS WORKING WITH THE CITY & COUNTY OF HONOLULU ("CITY") ON THE REALIGNMENT OF AUAHI STREET AND THE CONVEYANCE OF THE CORNER LOT TO VICTORIA WARD, LIMITED OR THE WARD VILLAGE MASTER ASSOCIATION AT WHICH POINT OWNERS WILL HAVE PERMANENT PEDESTRIAN AND VEHICULAR ACCESS OVER THE CORNER LOT. THE DEVELOPER DOES NOT GUARANTEE, WARRANT OR REPRESENT OWNERSHIP OF THE CORNER LOT, THAT THE CORNER LOT WILL BE DEVELOPED, LANDSCAPED OR IMPROVED AS DEPICTED, OR AT ALL, OR THAT OWNERS WILL HAVE ACCESS THROUGH THE CORNER LOT TO ENTER THE PROJECT UNLESS AND UNTIL THE PROCESS WITH THE CITY IS COMPLETE. OWNERS WILL STILL HAVE PEDESTRIAN AND VEHICULAR ACCESS INTO THE PROJECT, HOWEVER, OFF AUAHI STREET IN SUCH EVENT.

WARNING: THE CALIFORNIA DEPARTMENT OF REAL ESTATE HAS NOT INSPECTED, EXAMINED, OR QUALIFIED THIS OFFERING.

THIS BROCHURE IS NOT INTENDED TO BE AN OFFER TO SELL NOR A SOLICITATION OF OFFERS TO BUY REAL ESTATE IN KALAE TO RESIDENTS OF CONNECTICUT, IDAHO, NEW JERSEY, OREGON, PENNSYLVANIA OR SOUTH CAROLINA, OR TO RESIDENTS OF ANY OTHER JURISDICTION WHERE PROHIBITED BY LAW.

NOTICE TO NEW YORK RESIDENTS

THE DEVELOPER OF KALAE AND ITS PRINCIPALS ARE NOT INCORPORATED IN, LOCATED IN, OR RESIDENT IN THE STATE OF NEW YORK. NO OFFERING IS BEING MADE IN OR DIRECTED TO ANY PERSON OR ENTITY IN THE STATE OF NEW YORK OR TO NEW YORK RESIDENTS BY OR ON BEHALF OF THE DEVELOPER/OFFERER OR ANYONE ACTING WITH THE DEVELOPER/OFFERER'S KNOWLEDGE. NO SUCH OFFERING, OR PURCHASE OR SALE OF REAL ESTATE BY OR TO RESIDENTS OF THE STATE OF NEW YORK, SHALL TAKE PLACE UNTIL ALL REGISTRATION AND FILING REQUIREMENTS UNDER THE MARTIN ACT AND THE ATTORNEY GENERAL'S REGULATIONS ARE COMPLIED WITH, A WRITTEN EXEMPTION IS OBTAINED PURSUANT TO AN APPLICATION IS GRANTED PURSUANT TO AND IN ACCORDANCE WITH COOPERATIVE POLICY STATEMENTS #1 OR #7, OR A "NO-ACTION" REQUEST IS GRANTED.

EXCLUSIVE PROJECT BROKER WARD VILLAGE PROPERTIES, LLC (RB-21701) COURTESY TO QUALIFYING BROKERS;
SEE PROJECT BROKER FOR DETAILS. COPYRIGHT ©2022. EQUAL HOUSING OPPORTUNITY 

Howard Hughes

